

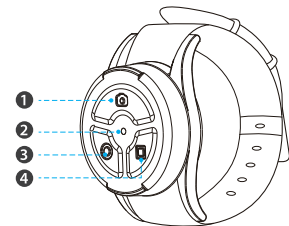
User Manual

Bluetooth Remote Control

for G3 / F1

GitUp Ltd.

The Basics

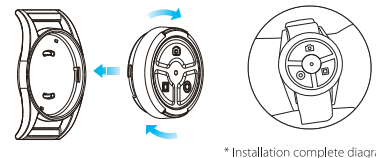


- 1 Photo Button
- 2 LED Indication Light
- 3 Video Button
- 4 Power Button

How to install the remote control

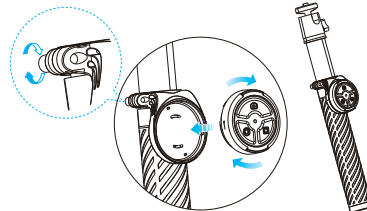
The remote control for G3 and F1 action camera acts an extension of the camera itself. It can be wrist-worn like a watch, also support mounted on selfie stick.

1. Used as wrist remote control



* Installation complete diagram

2. Mounted on selfie stick



How to pair it with GitUp action camera

1. Pair with F1 action camera

1) Power on the F1 action camera and switch to setting mode through Power / Mode button.



2) Press the Shutter / Select button to enter system setting menu and switch to Bluetooth option through Power / Mode button.

3) Then press the Shutter / Select button to set the Bluetooth option to "On".



4) Put remote control wrist close to the camera, press the Video button [] and Photo button [] at the same time.

5) The LED would flash red then turn to blue if the remote control paired successfully. and now you could exit setting mode and operate the camera by remote control.

2. Pair with G3 Duo camera

1) From the main screen, swipe down to enter the quick settings, and select bluetooth icon [] to turn it on.



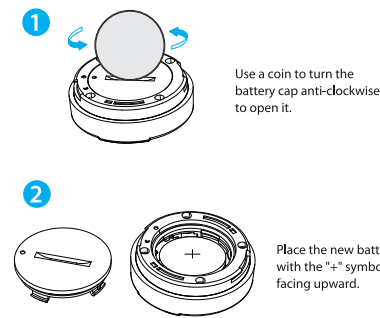
2) Refer to F1 action camera pairing step #4, #5.

How to use the remote control

Function	How to operate the remote control
Take a photo	Press Camera button [] once to take a photo. (When the camera is recording, press Power button [] to stop it first)
Take continuous photo	While the camera in photo capture mode, holding down the Camera button [] to capture a series of photos continuously
Start / Stop video recording	Press Video button [] once to start video recording, press Power button [] to stop recording
Take a video snapshot	When the camera is recording, you could press Camera button [] to take a video snapshot
Power off the camera	Press and hold the Power button [] for 3 seconds to power off the camera

Replace the battery for remote control

The remote control uses the CR2032 battery which normally lasts 3 to 5 months. If it shows no LED signal while pressing the buttons, very likely the battery has run out then you can buy the battery and replace it with new one.



Notice

1. If it's not paired successfully the first time, please repeat the pairing steps for several times till it works.
2. If the led doesn't blink when pressing, it means that battery is empty and needs a replacement. GitUp Remote Control Wrist uses CR2032 battery, which can be easily obtained from local stores.
3. The remote control is waterproof, but the limitation depth would be 10 meters.

Join GitUp Community

